

# Battery Replacement Guide

AgaMatrix WaveSense JAZZ™  
Blood Glucose Monitoring System



## BATTERY REPLACEMENT INSTRUCTIONS

**IMPORTANT:** Only use CR2032 or DL2032 batteries with this meter. Call Customer Care at 0800 093 1812 or 01235 838588\* for assistance.

### About the AgaMatrix WaveSense JAZZ Meter Batteries



The AgaMatrix WaveSense JAZZ Meter has two CR2032, 3-volt, lithium batteries inside.

**Battery #1:** operates the backlight only

**Battery #2:** operates the meter's testing and menu functions

### Battery Display Messages



**Low Battery Message:** Flashing message  
**MEANING:** Battery #2 in your meter is low. The meter can still be used for testing.



**Dead Battery Message:** Flashing message  
**MEANING:** Battery #2 in your meter is dead. The meter cannot be used for testing, until Battery #2 is replaced.



**Low Backlight Battery:** Backlight flashes when user presses the BACKLIGHT (☺) button.  
**MEANING:** Battery #1 in your meter is low. The meter can still be used for testing.

**If a Low or Dead Battery Message is displayed on your meter, ONLY REPLACE AND DISPOSE OF BATTERY #2.**

### Replacing the Batteries (For more details, see your AgaMatrix WaveSense JAZZ Owner's Guide)

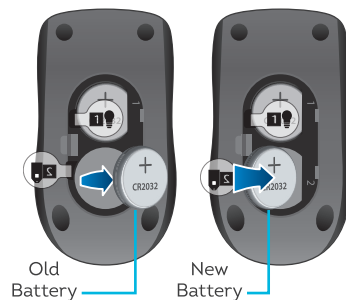
#### 1 Open the battery door:

Make sure the meter is deactivated. Turn the meter so you are looking at the battery door. Push the battery door clip to the right to open. Remove the battery door. Be careful not to misplace the battery door.



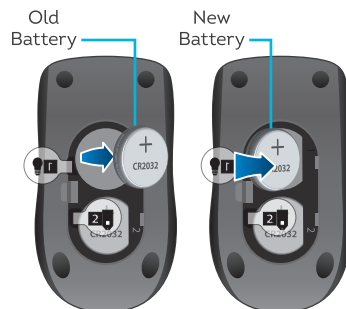
#### 2 To replace the meter battery (#2):

Remove the used battery, pull the appropriate tab to pop out the battery. **A replacement battery is included in the pocket of your meter's carrying case.** Locate the new, replacement battery. Install the new battery with the positive (+) sign facing up towards you.



#### 3 To replace the backlight battery (#1):

Remove the used battery, pull the appropriate tab to pop out the battery. **A replacement battery is included in the pocket of your meter's carrying case.** Locate the new, replacement battery. Install the new battery with the positive (+) sign facing up towards you.



#### 4 Close the battery door:

Angle the battery door back onto the meter and swing down until it snaps gently into place. Ensure that the plastic tags are pushed in under the battery door. Make sure that the battery door is completely closed before using. Please dispose of used batteries according to your local environmental regulations.



### Time and Date Setting After Battery Replacement

**IMPORTANT:** When the meter is deactivated and you are replacing battery #2, the time and date information may be lost after the battery is removed from the meter. If this happens, activate the meter after installing the new battery and it will prompt you to set the time and date.

If the date and time need to be set, the word "SET" will be displayed the first time the meter is activated by pressing the TICK (✓) button or inserting a test strip.

*Note: The meter retains the date and time format [24 or 12 hour time, M-d (Month-Day) or d-M (Day-Month)].*

#### 1 Set the year:

Set the year (flashing) with the DOWN (∨) or UP (∧) arrow buttons. Press the TICK (✓) button to confirm your selection.



#### 2 Set the month:

Set the month (flashing) with the DOWN (∨) or UP (∧) arrow buttons. Press the TICK (✓) button to confirm your selection.



#### 3 Set the day:

Set the day (flashing) with the DOWN (∨) or UP (∧) arrow buttons. Press the TICK (✓) button to confirm your selection.



#### 4 Set the hour:

Set the hour (flashing) with the DOWN (∨) or UP (∧) arrow buttons. Press the TICK (✓) button to confirm your selection.



#### 5 Set the minute:

Set the minute (flashing) with the DOWN (∨) or UP (∧) arrow buttons. Press the TICK (✓) button to confirm your selection. If the meter was activated via test strip insertion, pressing TICK (✓) allows you to perform a test. If the meter was activated via the TICK (✓) button, the meter will enter menu mode.



In case of emergency, contact your healthcare professional or emergency medical response.



0123



AgaMatrix, Inc. 7C Raymond Ave  
Salem, NH 03079 USA



MDSS GmbH, Schiffgraben 41  
30175 Hannover, Germany

\*Mobile Freephone, if free minutes included in contract.

©2005-2015 AgaMatrix, Inc. All rights reserved. All trademarks and/or copyrights are properties of their respective owners.