

# Quick Start Guide

## AgaMatrix WaveSense JAZZ™ Blood Glucose Monitoring System

### Customer Care:

0800 093 1812 (UK) | 1800 817 315 (ROI)

In case of emergency, contact your healthcare professional or emergency medical response.



# AgaMatrix™

EN ISO 15197:2015  
**ACCURACY**

## NO CODE

**Replacement Batteries are Included for Your Meter!**

Two replacement CR2032, 3-volt, lithium batteries are included in your meter's carrying case. Refer to the instructions on the reverse side for battery replacement.



### About the AgaMatrix WaveSense JAZZ System

The AgaMatrix WaveSense JAZZ Blood Glucose Monitoring System allows you to check your glucose levels with whole blood. For complete instructions, see your AgaMatrix WaveSense JAZZ Owner's Guide.



### Blood Glucose Meter

- 1) Display
- 2) TICK Button: confirm or make a selection
- 3) DOWN Arrow Button: scrolls forward
- 4) UP Arrow Button: scrolls backward
- 5) BACKLIGHT Button
- 6) Test Strip Port

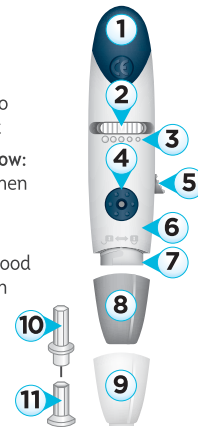
### Test Strip

- 1) Contact Bars: insert this end into the test strip port
- 2) Visual Fill Window: completely fills when enough sample is applied
- 3) Sample Area: blood or control solution applied here



### Lancing System

- 1) Cocking Handle
- 2) Depth Selector
- 3) Depth
- 4) Release Button
- 5) Lancet Ejector
- 6) Lancing Device Body
- 7) Lancet Holder
- 8) Lancing Device Cap
- 9) Alternate Site Testing Cap (Clear)
- 10) Lancet
- 11) Lancet Cover



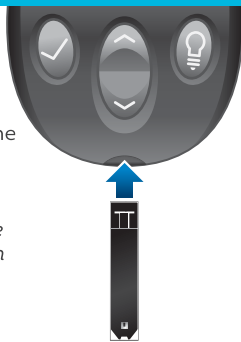
**WARNING:** The AgaMatrix Lancing Device **MUST** be used **ONLY** to obtain a blood sample by a single person for self-testing. Do not use any lancet or lancing device that has been used by another person.

### Basic Steps (For complete instructions, see your AgaMatrix WaveSense JAZZ Owner's Guide)

#### 1 Insert the test strip into the meter:

Insert the test strip, with the contact bars facing up, into the test strip port. The meter will automatically be activated.

*CAUTION: To ensure accurate results, wash your hands with warm, soapy water and dry thoroughly before every test.*



#### 2 Lance test site:

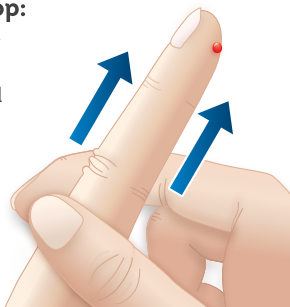
Reference the instructions for how to prepare the lancing device, on the right.

Press the lancing device against the site to be lanced and press the release button.



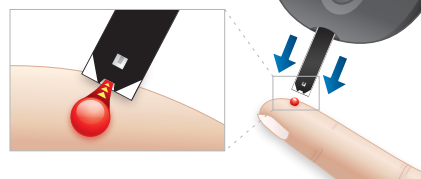
#### 3 Express blood drop:

Squeeze from the base of your finger up towards the tip, until a small blood drop forms.



#### 4 Bring test strip to blood sample:

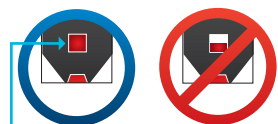
The test strip draws the blood into the test strip.



#### 5 Remove test strip from the blood sample when the visual fill window completely turns red and the meter beeps:

The calculation animation 1-2-3 indicates that the meter is calculating your result.

**((BEEP))**



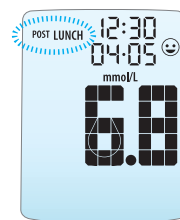
The entire visual fill window will turn red.



#### 6 Final steps:

Your test result is displayed on the meter along with a mealtime tag (flashing). Press the TICK button to confirm it. To change the tag or for more details, see your owner's guide.

Remove the used test strip. The meter will automatically deactivate. Snap off the lancing device cap and replace lancet cover. Remove the used lancet. Discard the used test strip and lancet properly.



### Prepare the Lancing System

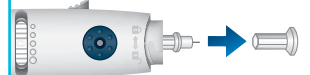
#### 1 Twist off the cap from the lancing device.



#### 2 Insert a new lancet firmly into the lancet holder. Press the release button to expose more of the lancet.



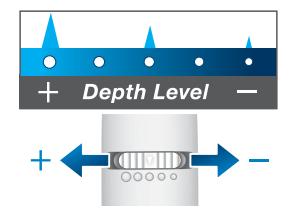
#### 3 Hold the lancet and twist the cover off.



#### 4 Replace lancing device cap.



#### 5 Set the skin penetration depth.



#### 6 Pull the cocking handle out until it clicks.



# Quick Start Guide

AgaMatrix WaveSense JAZZ™  
Blood Glucose Monitoring System



## BATTERY REPLACEMENT INSTRUCTIONS

**IMPORTANT:** Only use CR2032 or DL2032 batteries with this meter. Call Customer Care at 0800 093 1812 (UK) or 1800 817 315 (ROI) for assistance.

### About the AgaMatrix WaveSense JAZZ Meter Batteries



The AgaMatrix WaveSense JAZZ Meter has two CR2032, 3-volt, lithium batteries inside.

**Battery #1:** operates the backlight only

**Battery #2:** operates the meter's testing and menu functions

### Battery Display Messages



**Low Battery Message:** Flashing message  
**MEANING:** Battery #2 in your meter is low. The meter can still be used for testing.



**Dead Battery Message:** Flashing message  
**MEANING:** Battery #2 in your meter is dead. The meter cannot be used for testing, until Battery #2 is replaced.



**Low Backlight Battery:** Backlight flashes when user presses the BACKLIGHT (☽) button.  
**MEANING:** Battery #1 in your meter is low. The meter can still be used for testing.

**If a Low or Dead Battery Message is displayed on your meter, ONLY REPLACE AND DISPOSE OF BATTERY #2.**

### Replacing the Batteries (For more details, see your AgaMatrix WaveSense JAZZ Owner's Guide)

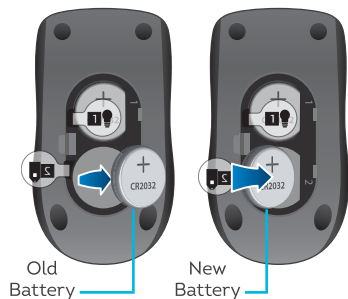
#### 1 Open the battery door:

Make sure the meter is deactivated. Turn the meter so you are looking at the battery door. Push the battery door clip to the right to open. Remove the battery door. Be careful not to misplace the battery door.



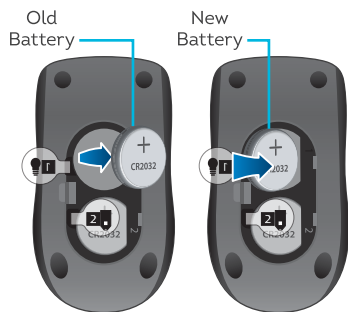
#### 2 To replace the meter battery (#2):

Remove the used battery, pull the appropriate tab to pop out the battery. **A replacement battery is included in the pocket of your meter's carrying case.** Locate the new, replacement battery. Install the new battery with the positive (+) sign facing up towards you.



#### 3 To replace the backlight battery (#1):

Remove the used battery, pull the appropriate tab to pop out the battery. **A replacement battery is included in the pocket of your meter's carrying case.** Locate the new, replacement battery. Install the new battery with the positive (+) sign facing up towards you.



#### 4 Close the battery door:

Angle the battery door back onto the meter and swing down until it snaps gently into place. Ensure that the plastic tags are pushed in under the battery door. Make sure that the battery door is completely closed before using. Please dispose of used batteries according to your local environmental regulations.



### Time and Date Setting After Battery Replacement

**IMPORTANT:** When the meter is deactivated and you are replacing battery #2, the time and date information may be lost after the battery is removed from the meter. If this happens, activate the meter after installing the new battery and it will prompt you to set the time and date.

If the date and time need to be set, the word "SET" will be displayed the first time the meter is activated by pressing the TICK (✓) button or inserting a test strip.

*Note: The meter retains the date and time format [24 or 12 hour time, M-d (Month-Day) or d-M (Day-Month)].*

#### 1 Set the year:

Set the year (flashing) with the DOWN (∨) or UP (∧) arrow buttons. Press the TICK (✓) button to confirm your selection.



#### 2 Set the month:

Set the month (flashing) with the DOWN (∨) or UP (∧) arrow buttons. Press the TICK (✓) button to confirm your selection.



#### 3 Set the day:

Set the day (flashing) with the DOWN (∨) or UP (∧) arrow buttons. Press the TICK (✓) button to confirm your selection.



#### 4 Set the hour:

Set the hour (flashing) with the DOWN (∨) or UP (∧) arrow buttons. Press the TICK (✓) button to confirm your selection.



#### 5 Set the minute:

Set the minute (flashing) with the DOWN (∨) or UP (∧) arrow buttons. Press the TICK (✓) button to confirm your selection. If the meter was activated via test strip insertion, pressing TICK (✓) allows you to perform a test. If the meter was activated via the TICK (✓) button, the meter will enter menu mode.



AgaMatrix Customer Care: 0800 093 1812 (UK) | 1800 817 315 (ROI)

In case of emergency, contact your healthcare professional or emergency medical response.