

Quick Start Guide

AgaMatrix Agile™ Blood Glucose Monitoring System

AgaMatrix.



**AUTOMATICALLY SYNCs TO APP VIA
Bluetooth® wireless technology**

Reference steps on the reverse side to pair and sync.

Customer Care:
0800 093 1812 (UK) | 1800 817 315 (ROI)



In case of emergency, contact your healthcare professional or emergency medical response.

About the System

The AgaMatrix Agile Blood Glucose Monitoring System allows you to check your glucose levels with capillary whole blood. For complete instructions, see your AgaMatrix Agile Owner's Guide.

WARNING: The AgaMatrix Lancing Device **MUST** be used **ONLY** to obtain a blood sample by a single person for self-testing. Do not use any lancet or lancing device that has been used by another person.

Blood Glucose Meter

- 1) Display Area
- 2) Test Strip Port
- 3) Meter Button: Press to turn on meter, select the fasting tag and view past glucose test results.



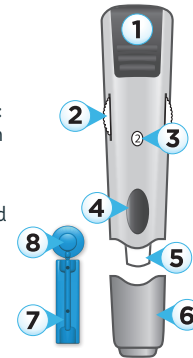
Test Strip

- 1) Contact Bars: insert this end into the test strip port
- 2) Visual Fill Window: completely fills when enough sample is applied
- 3) Sample Area: blood or control solution applied here



Lancing System

- 1) Cocking Handle
- 2) Depth Selector Dial
- 3) Depth Indicator Window
- 4) Release Button
- 5) Lancet Holder Cup
- 6) Lancing Device Cap
- 7) Lancet
- 8) Lancet Cover



Note: You should pair your meter to the AgaMatrix Diabetes Manager App (the App) to set the meter's time and date before testing. This will ensure that results from meter are sent wirelessly to the App. Please see the reverse side of this Quick Start Guide or see your Owner's Guide for further details.

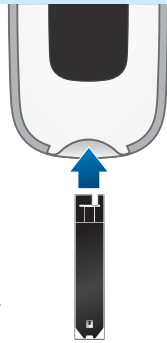
Blood Glucose Testing Steps

(For complete instructions, see your AgaMatrix Agile Owner's Guide)

1 Insert the test strip into the meter:

Insert the test strip, with the contact bars facing up, into the test strip port. The meter will automatically be activated.

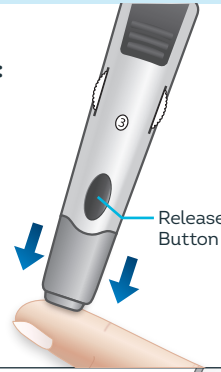
CAUTION: To ensure accurate results, wash your hands with warm, soapy water, rinse and thoroughly dry before every test.



2 Lance the test site:

Please see the instructions for how to prepare the lancing device, on the right.

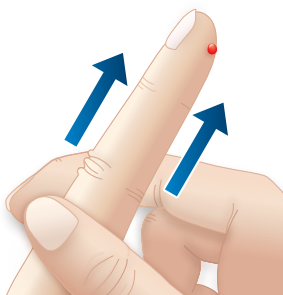
Press the lancing device against the site to be lanced and press the release button.



3 Obtain a drop of blood:

Squeeze from the base of your finger up towards the tip, milking your finger, until a small blood drop forms.

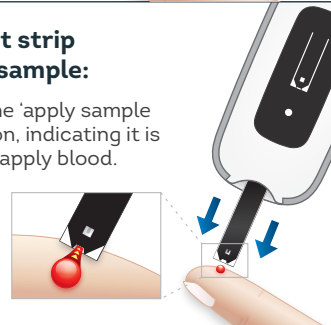
Do not squeeze directly around the lanced area.



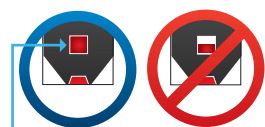
4 Bring the test strip to the blood sample:

The meter displays the 'apply sample to test strip' animation, indicating it is now ready for you to apply blood.

The test strip draws the blood into the test strip.



5 Remove test strip from the blood sample when the visual fill window completely turns red and the meter beeps:



The entire visual fill window will turn red.

The calculation animation 1-2-3 indicates that the meter is calculating your result.



6 View test result and final steps:

Following the calculation animation, the test result will appear on the meter display. The test result is stored in the meter's memory.

Adding Fasting Tag (Optional): Press the Meter Button once to tag the glucose reading with the Fasting Tag.

Remove the used test strip from the meter. The meter will automatically turn off.

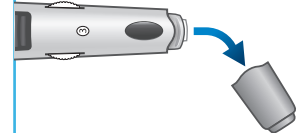
Snap off the lancing device cap and cover the lancet point with the flat of the cover. Extract the lancet by pushing the lancet ejector downwards.

Discard the used test strip and lancet properly. Follow your healthcare professional's instructions for disposal.



Prepare the Lancing System

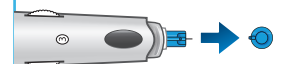
- 1 Snap off the cap from the lancing device.



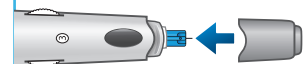
- 2 Insert a new lancet firmly into the lancet holder cup.



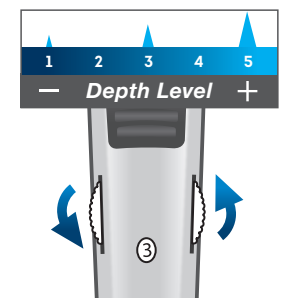
- 3 Twist and gently pull the lancet cover off.



- 4 Replace lancing device cap.



- 5 Set the skin penetration depth.



- 6 Pull the cocking handle out until it clicks.



Quick Start Guide

AgaMatrix Agile™
Blood Glucose Monitoring System



**AUTOMATICALLY SYNCs TO APP VIA
Bluetooth® wireless technology**

Note: You should sync your meter to the AgaMatrix Diabetes Manager App (the App) to set the meter's time and date before testing. This will ensure that results from meter are sent wirelessly to the App.

PAIRING & SYNCING INSTRUCTIONS

The AgaMatrix Diabetes Manager App works on a variety of iOS and Android™ devices. Visit www.agamatrix.co.uk for minimum operating system requirements.

Pairing and Syncing Your Meter With the App

Use the AgaMatrix Agile Meter with the AgaMatrix Diabetes Manager App (the App) to sync glucose results directly to your iOS or Android device.

You should pair your meter to the App to set your meter's time and date before performing your first test. Test results without a set time and date will be displayed on your meter with "--:--" and "--/--" in place of the time and date.

1 Download and open the App:

Download the AgaMatrix Diabetes Manager App from the App StoreSM (for Apple devices) or from Google PlayTM (for Android devices).

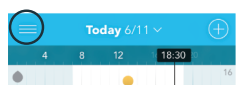


Tap on the App icon on your supported device.



2 Navigate to the menu icon:

Tap on the icon made of three lines.



3 Add a new meter:

Tap on "Meters." Tap "Add a new meter."

On your meter, press and hold the Meter Button. Select your meter when it appears in the app.

4 Enter the passkey:

A 6-digit passkey will appear on the meter. Type the passkey number into the App.

Example of a passkey:



5 Confirm pairing is successful:

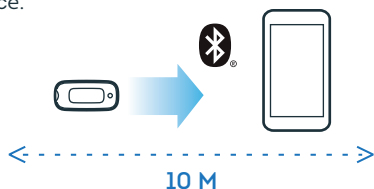
Both the meter and the App will indicate that pairing was successful. The meter will have a tick mark and the App will show a message.

Example of tick mark:



6 Sync data:

After your meter is paired with your device, it will "sync", or transfer data, every time it is within close proximity of your paired device.



Note: The meter and App must be within 10 metres of each other in order to pair and transfer data.

BATTERY REPLACEMENT INSTRUCTIONS

IMPORTANT: Only use CR2032 or DL2032 batteries with the AgaMatrix Agile Meter.

Battery Display Messages



Low Battery Message: (This message appears for 2 seconds) You can still perform a test when you see a low battery message, but batteries should be replaced as soon as possible. Use only CR2032 or DL2032 batteries.



Dead Battery Message: The batteries in your meter do not have enough power to activate your meter and perform a test; batteries must be replaced.

Replacing the Batteries

(For more details, see your AgaMatrix Agile Owner's Guide)

1 Open the battery door:

Make sure the meter is off. Turn the meter so you are looking at the battery door. Slide the battery door off the meter.



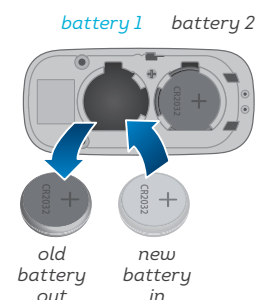
2 Replace battery 1:

Two replacement batteries are included in the pocket of your meter's carrying case.

Locate the replacement batteries.

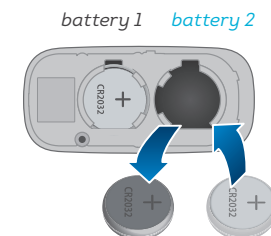
Remove battery 1 with a non-metallic tool.

Install a replacement battery in the empty slot with the positive (+) sign facing up.



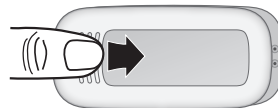
3 Replace battery 2:

Repeat the steps above for battery 2.



4 Close the battery door:

Slide the battery door onto the meter. Make sure that the battery door is completely closed before using the meter.



Please dispose of used batteries according to your local environmental regulations.



0123



AgaMatrix, Inc. 7C Raymond Ave
Salem, NH 03079 USA



MDSS GmbH, Schiffgraben 41
30175 Hannover, Germany

The Bluetooth® word mark and logos are owned by the Bluetooth® SIG, Inc. and any use of such marks by AgaMatrix, Inc. is under license. Other trademarks and trade names are those of their respective owners. Apple and the Apple logo are trademarks of Apple Inc., registered in the U.S. and other countries. App Store is a service mark of Apple Inc. Android is a trademark of Google LLC. Google Play is a trademark of Google LLC.